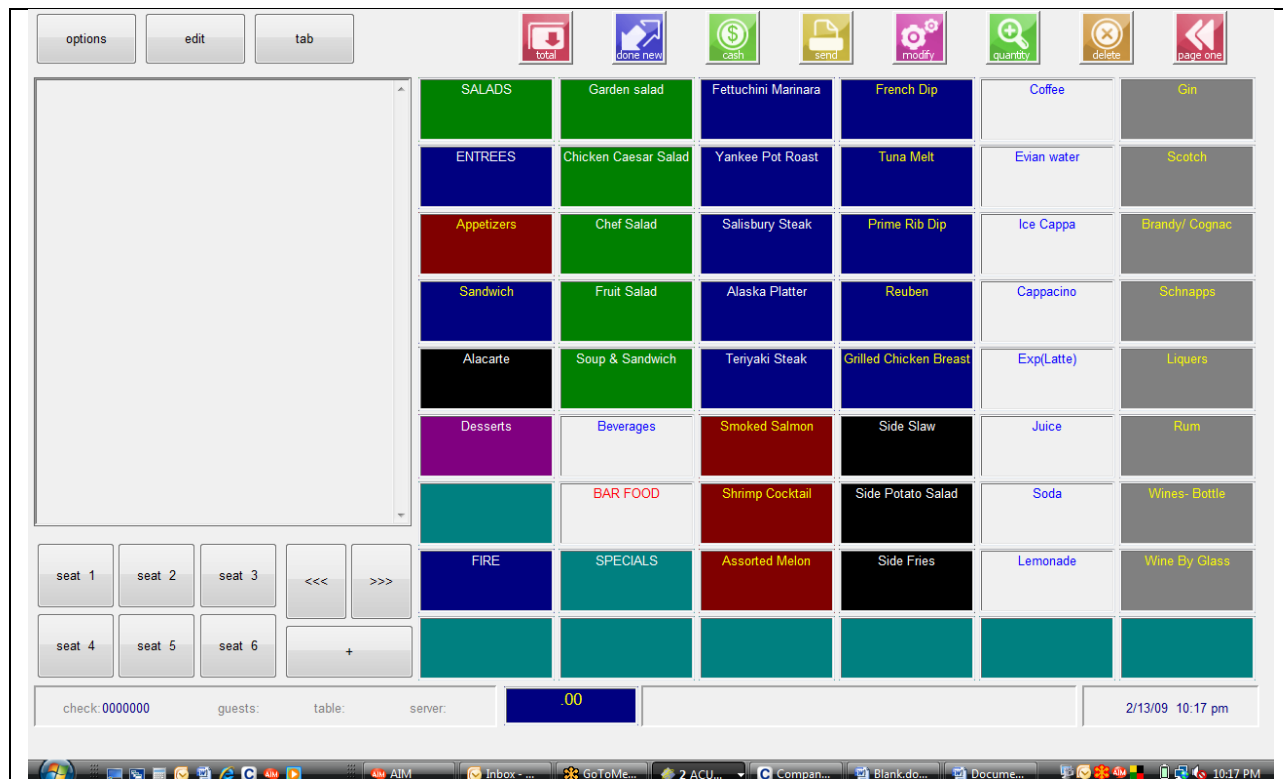


Execu/Touch POS Menu Screen Configuration



This is the screen from which you select menu items for the check or ticket. Each terminal might have a different menu. For example, the café might have a different menu than the restaurant. Each shift or time of day may be different. For example, Shift 1 might have breakfast and Shift2 might have lunch. The menu also may be different on a particular day of the week.

This screen shows categories such as ENTREES as well as specific items such as Tuna Melt. Categories have items within them. When a category is selected, the items within that category will display. Choosing items directly, such as the Tuna Melt, is a good option for popular items.

Color coding is a good way to make selection easy for servers. Keep them few and pleasing. This screen is called the “Keyboard”.

Execu/Touch POS Menu Screen Configuration

1	Store Record	10	Employee Work Codes
2	Department Records	11	Void Codes
3	Payment Records	12	Table Set-up
4	Discount Records	13	Terminal Records
5	Menu Items	14	Printer Set-up
6	Item Modifiers	15	Item Button (Keyboard) Set-up
7	Item Categories	16	Edit/ Purge History Records
8	Combinations (Value Meals)	17	Exit POS
9	Employee Records		Exit

To set your items up on the “keyboard” or order entry screen, choose #15 on the POS Administrator menu, Item Button (Keyboard) Set-up.

Execu/Touch POS Menu Screen Configuration

Terminal: 1 (1-99, (C)opy keyboard set-up)

Menu....: 1 (1-8)

Page....: 1 (1-2)

Each POS terminal will have a terminal number. You can have up to 8 menus per menu item. Each menu can have up to 2 pages. Each terminal can have a main and an alternate menu for each time range. (See Terminal Records.)

Once you've set up a keyboard record for a terminal, you can copy it to another terminal if that terminal should display the same menu. Be very careful in doing this so that you don't copy backwards.

Execu/Touch POS Menu Screen Configuration

Exit

C 1	I 112	I 431	I 522	I 801	C G
C 4	I 121	I 432	I 524	I 802	C H
C 2	I 122	I 433	I 542	I 810	C I
C 5	I 125	I 434	I 544	I 804	C P
C 6	I 126	I 435	I 547	I 805	C Q
C 7	C 8	I 261	I 601	I 808	C R
	C 9	I 262	I 602	I 809	C W
I F001	C B	I 263	I 603	I 811	C U

Term=01 Menu=03 Page=1 <Esc> exit

(C)ategory, (I)tem, (P)ayment, (M)odifier

This is the Item Button/Keyboard setup screen. Each square in the grid represents one of the item buttons on the POS menu selection screen. To place a category, type a C in the square. When you do this, your cursor will move to the right. Here, within the same square, type the category code. In the top left square, **C 1** represents Category 1. In the second square on the top line, you see **I 112**. I represents Item and 112 represents that item number. You will see this configuration only at the terminal assigned for this menu and only during the time designated.

Execu/Touch POS Menu Screen Configuration

Exit

Enter Item Code:

EXISTING ITEM

1.	Item description:	<input type="text" value="Alaska Platter"/>							
2.	Kitchen description:	<input type="text"/>							
3.	(P)rod(S)erv(M)emo:	<input type="text" value="P"/>	21.	Menu 1 Price:	<input type="text" value=".00"/>	(A/M):	<input type="checkbox"/>		
4.	Item Taxable?:	<input type="text" value="YNNN"/>	22.	Menu 2 Price:	<input type="text" value=".00"/>	(A/M):	<input type="checkbox"/>		
5.	Item cost:	<input type="text" value=".00"/>	23.	Menu 3 Price:	<input type="text" value="11.95"/>	(A/M):	<input checked="" type="checkbox" value="A"/>		
6.	Department code:	<input type="text" value="F"/>	24.	Menu 4 Price:	<input type="text" value=".00"/>	(A/M):	<input type="checkbox"/>		
7.	Remote printer(s):	<input type="text" value="11"/> <input type="text" value="0"/> <input type="text" value="0"/> <input type="text" value="0"/>	25.	Menu 5 Price:	<input type="text" value=".00"/>	(A/M):	<input type="checkbox"/>		
8.	Modifier sets (0-Z):	<input type="text" value="Z"/>	26.	Menu 6 Price:	<input type="text" value=".00"/>	(A/M):	<input type="checkbox"/>		
9.	Auto mod window?:	<input type="text" value="Y"/>	27.	Menu 7 Price:	<input type="text" value=".00"/>	(A/M):	<input type="checkbox"/>		
10.	Kitchen dept (1-90):	<input type="text" value="2"/>	28.	Menu 8 Price:	<input type="text" value=".00"/>	(A/M):	<input type="checkbox"/>		
11.	Cooking time (min):	<input type="text" value="0"/>							
12.	Cover item? (Y/N):	<input type="text" value="Y"/>	31.	Category:	<input type="text" value="4"/>				
13.	Allow discount?:	<input type="checkbox"/>	32.	Category:	<input type="text"/>				
14.	Inventory #:	<input type="text"/>	33.	Category:	<input type="text"/>				
15.	Item in 86 List?:	<input type="checkbox"/>	34.	Category:	<input type="text"/>				
16.	Exclude from tips?:	<input type="checkbox"/>	41.	Touch Button color:	<input type="text" value="0"/> XXXX				

Each menu item is assigned at least one menu. In the example above, the item will display only on Menu3. It will not be available on any other menu unless a price and A is entered. For Open items, leave the price blank and enter M instead of A. A will assign the price Automatically. M will prompt you for a Manually entered price. Each item that you wish to display on the Order Entry Screen must have an A or M for the desired menu. Any A item must have a price.

Execu/Touch POS Menu Screen Configuration

Terminal: EXISTING RECORD

Description:

Printer:

Terminal type:

Keyboard type:

Customer display:

Terminal location:

Print time on each line of check?:

Allow 'open cash drawer':?

Print check when closed to cash?:

Inventory location/ company:

'Next check' terminals (fast food only):

Start Time	End Time	Shift	Menu	Alt Menu	Sun?	Mon?	Tue?	Wed?	Thu?	Fri?	Sat?
00.00	1100	1	2	1	N	Y	Y	Y	Y	Y	Y
00.00	1300	1	7	7	Y	N	N	N	N	N	N
1100	1700	2	4	5	N	Y	Y	Y	Y	Y	Y
1300	1700	2	4	5	Y	N	N	N	N	N	N
1700	2400	3	3	4	Y	Y	Y	Y	Y	Y	Y
00.00	00.00	0	0								

Redirect remote printers from-to:

Default table section:

Print check when Done/New?:

Special tool bar button:

'reorder'

The terminal record determines which menu displays at which time for each POS terminal. All 24 hours should be covered even if the restaurant is only open for 18 hours. Look at the first two lines in the grid. Both are for breakfast. However, the first line is for Monday through Saturday and ends at 11:00 am. The second line is for Sunday only and ends at 1:00 pm. Three shifts are designated in this grid. This allows for shift reports. However, if you prefer to keep everything as Shift1, the system will operate fine. The Menu you select will be the menu that displays at this terminal during the time and days selected. The Alt Menu is the alternate menu for that time. The alternate menu is selected in the Order entry screen through Edit > Change Menu.