

Execu/Touch® Modifier Comment Amend/Edit

Enter the modifier comment as usual. In the example below, the cursor is where the dot is - just past the J which is the last letter entered.

Enter Comment

BLACJ .

1	2	3	4	5	6	7	8	9	0
Q	W	E	R	T	Y	U	I	O	P
A	S	D	F	G	H	J	K	L	-
Z	X	C	V	B	N	M	,	.	/
Exit	Clear	Backspace							Ok

Since the word BLACK was misspelled, you can use the Backspace button to go back one space and type a K over the J:

Enter Comment

BLACJ .

1	2	3	4	5	6	7	8	9	0
Q	W	E	R	T	Y	U	I	O	P
A	S	D	F	G	H	J	K	L	-
Z	X	C	V	B	N	M	,	.	/
Exit	Clear	Backspace							Ok

K overwrote J. Touch OK to save it.

Enter Comment

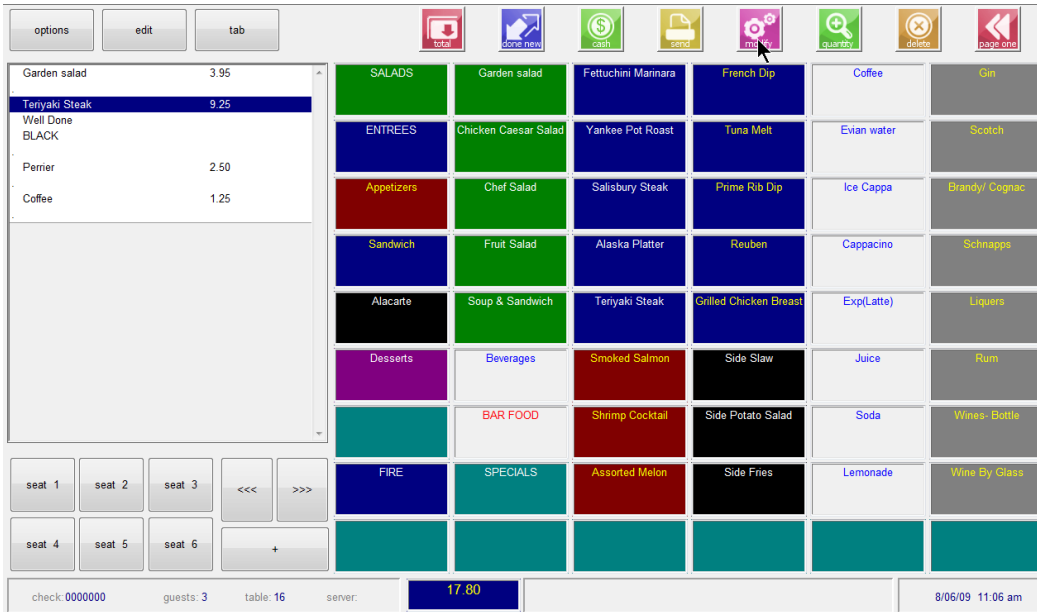
BLACK .

1	2	3	4	5	6	7	8	9	0
Q	W	E	R	T	Y	U	I	O	P
A	S	D	F	G	H	J	K	L	-
Z	X	C	V	B	N	M	,	.	/
Exit	Clear	Backspace							Ok

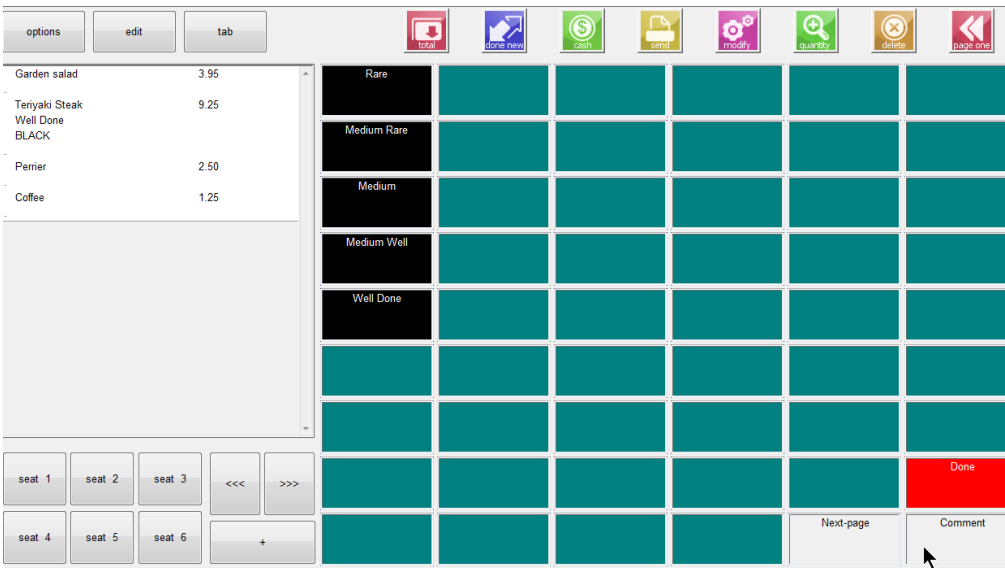
Execu/Touch® Modifier Comment Amend/Edit

You can change a modifier at any time as long as it has not been sent to the kitchen (Done/new or Send).

You can change BLACK which was the modifier comment added earlier. To edit the comment, touch the item, which is Teriyaki Steak in the example below. Then, touch the “modify” button.



Touch Comment.



The modifier comment keyboard will open. Your cursor will be at the end of the comment. To amend (add to the end) just enter the letters. For example, to change BLACK to BLACKENED enter ENED and touch OK. To edit, use the backspace bar to go back. You won't be able to insert, but you can type over what's there. For example to change BLOCK to BLACK you'll backspace until the cursor (the dot) is below the O. Then type ACK which will overwrite OCK. Then touch OK to save it.

